

HXML

EXPLOSION PROOF LINEAR LED LIGHTING

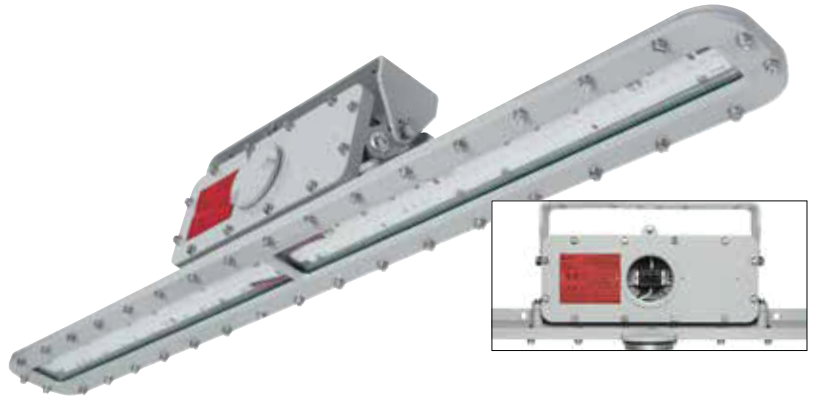
Classifications

- Class I, Division 1, Groups C & D
- Class I, Division 2, Groups C & D
- Class II, Division 1, Groups E, F & G
- Class III
- Simultaneous Presence
- UL 1598A Marine Outside Type
- UL 1598 Wet Locations
- UL 8750 LED Safety
- UL 844 Hazardous Locations
- UL 924 Emergency Lighting
- Emergency Battery Backup
- -40°C to 65°C Ambient Temperature
- CSA C22.2 No. 250.0-08
- CSA C22.2 No. 137-M1981
- NEMA 4X, 7CD
- ABS Type Approved
- IP66
- Paint Spray Booth
- DLC Listed
- Tested to LM79 and LM80
- IECEx
- ATEX

KEY FEATURES

- Low-profile, lightweight design
- Convenient wiring access through screw-cap cover with toolless, cage clamp terminal block
- Self-contained emergency backup, no additional junction box required
- Heavy-duty, 7/16" thick die-cast safety cable attachment points
- Replaceable LED circuit boards and drivers with quick disconnects
- Adjustable mounting bracket with 90 degree range of motion and 13 locking positions*

* Not included, must be ordered separately. Please see options section.



Standard Materials

- Body: A360 Aluminum (less than .4% copper content) with baked-on gray epoxy finish
- Gaskets: One-piece neoprene
- Lens: Tempered glass
- Hardware: Stainless steel

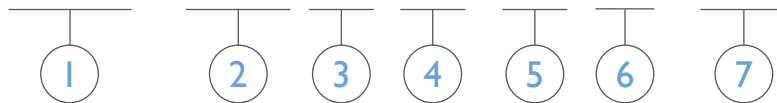
Additional Features

- Central safety cable attachment points for increased safety/reduced range of motion
- Feed-through and pendant mount capable
- Diffused lens option
- Standard 10kV surge protection, non EM models
- 4kV surge protection, EM models
- 5-year warranty

Certification Guide

Model	Length	Wattage	Operating Voltage	Total Lumens	Lumens per Watt	CRI	CCT	Ambient Temperature	Class I, Div. 1, Group C & D	Class I, Div. 2, Group C & D	Class II, Div. 1, Group E, F, G Class III	Simultaneous Presence	Paint Spray Booth	Supply Wire Suitable Temperature, °C
HXML04LC2U	2 ft	30W	120V - 277V 50/60 Hz	3806	129	82	4084	-40°C < Tamb < 55°C	T6	T4A	T6	T6	Yes	90°C
HXML04LC2N	2 ft	30W	347/480V 60 Hz	3806	129	82	4084	-40°C < Tamb < 55°C	T6	T4A	T6	T6	Yes	90°C
HXML05LC2U	2 ft	38W	120V - 277V 50/60 Hz	4794	128	82	4095	-40°C < Tamb < 55°C	T6	T4A	T6	T6	Yes	90°C
HXML05LC2N	2 ft	38W	347/480V 60 Hz	4794	128	82	4095	-40°C < Tamb < 55°C	T6	T4A	T6	T6	Yes	90°C
HXML06LC2U	2 ft	45W	120V - 277V 50/60 Hz	6139	135	82	4091	-40°C < Tamb < 55°C	T6	T4A	T6	T6	Yes	90°C
HXML06LC2N	2 ft	45W	347/480V 60 Hz	6139	135	82	4091	-40°C < Tamb < 55°C	T6	T4A	T6	T6	Yes	90°C
HXML07LC4U	4 ft	54W	120V - 277V 50/60 Hz	7291	134	82	4167	-40°C < Tamb < 60°C	T6	T4A	T6	T6	Yes	90°C
HXML07LC4N	4 ft	54W	347/480V 60 Hz	7291	134	82	4167	-40°C < Tamb < 60°C	T6	T4A	T6	T6	Yes	90°C
HXML09LC4U	4 ft	75W	120V - 277V 50/60 Hz	9290	130	82	4180	-40°C < Tamb < 60°C	T6	T4A	T6	T6	Yes	90°C
HXML09LC4N	4 ft	75W	347/480V 60 Hz	9290	130	82	4180	-40°C < Tamb < 60°C	T6	T4A	T6	T6	Yes	90°C
HXML09LC4UHA	4 ft	73W	120V - 277V 50/60 Hz	9060	130	82	4180	-40°C < Tamb < 65°C	T6	T4A	T6	T6	Yes	90°C
HXML09LC4NHHA	4 ft	73W	120V - 277V 50/60 Hz	9060	130	82	4180	-40°C < Tamb < 65°C	T6	T4A	T6	T6	Yes	90°C
HXML14LC4U	4 ft	90W	120V - 277V 50/60 Hz	12253	140	82	4120	-40°C < Tamb < 60°C	T6	T4A	T6	T6	Yes	90°C
HXML14LC4N	4 ft	90W	347/480V 60 Hz	12253	140	82	4120	-40°C < Tamb < 60°C	T6	T4A	T6	T6	Yes	90°C

HXML - 14 - L - C - 4 - N - XX



1 SERIES¹

XML LED = North American Standards
 EXML LED = ATEX and IECEx Standards

2 LAMPWATTAGE

04 = 30 Watt
 05 = 38 Watt
 06 = 45 Watt
 07 = 54 Watt
 09 = 75 Watt
 14 = 90 Watt

3 LAMP TYPE

L = LED (4000K CCT)

4 LENS

C = Clear
 D = Diffused²

5 NOMINAL FIXTURE LENGTH

2 = 2 Foot
 4 = 4 Foot

6 VOLTAGE/FREQUENCY

U = 120 - 277V 50/60 HZ
 N = 347/480V 60 HZ
 A = 120V 60 HZ
 B = 220 - 240V 50/60 HZ
 C = 277V 60 HZ

7 OPTIONS

RIG = Mounting Bracket & (2) Safety Cables
 MB = Mounting Bracket Ceiling or Wall
 HA = High Ambient 65°C Rated (75W Model Only)
 EM = Emergency Battery Backup (Not Available with 347/480V)³
 FB = Fuse Block⁴
 PB = Push to Test Switch for EM Option Only
 30 = 3000K (CCT)
 35 = 3500K (CCT)
 50 = 5000K (CCT)

¹ Mounting hardware not included. See options for mounting selections.

² Not available with EXML models.

³ 4kV surge protection. Supplemental 10kV surge protection not available on EM models.

⁴ Specify voltage when option FB is needed. When option FB is selected, one fuse is provided for 120 and 277V. Two fuses are provided for 220-240V. Fuse option not available for marine listed fixtures, EM versions, 347/480V or for fixtures listed for use in Canada.

Part numbering logic is for explaining part number structure only. Not all combinations are possible; consult factory for catalog numbers not listed on chart.