



Job Name: _____

Type: _____

Part #: _____

Notes: _____

LSLEDEM1

Thermoplastic Miniature Adjustable Emergency Lights INDOOR | DAMP

SPECIFICATIONS: INTERNAL

The LSLEDEM1 uses a rechargeable, maintenance free nickel cadmium battery. Configured with 120-277V input. The circuit board features an onboard solid state transformer, low voltage disconnect and brownout protection.

SPECIFICATIONS: EXTERNAL

The LSLEDEM1 is constructed from high impact, UV-stabilized, UL 94 V-0 plastic. The LSLEDEM1 comes standard in a white finish, option for black is available. Two fully adjustable 1.5W LED lamp heads ensure emergency lighting performance, accurate positioning and reduced maintenance. Universal mounting plate and quick snap design speeds installation. Easy field wiring & durable construction suitable for surface wall or ceiling installations.

EMERGENCY HEADS

LSLEDEM1 is remote capable of operating 2, single head remotes or 1 double head remote. Max load per unit: 3.4W. Remote heads are available, ask your LSL Rep for Compatible heads.

SPECIFICATIONS: ELECTRICAL

BATTERY: The LSLEDEM1 uses a rechargeable, maintenance free 3.6V 900mAH nickel cadmium battery that provides minimum emergency duration of 90 minutes. The recharge time of the battery is 24 hours. The battery operating temperature is from 68°F up to 86°F (20°C up to 30°C).

SPECIFICATIONS: MECHANICAL

The LSLEDEM1 ideal for use in hotels, offices, restaurants and other commercial applications. The LSLEDEM1 features a quick snap design the reduces installation time. Easy field wiring & durable construction is suitable for surface wall or ceiling installations.

AUTOTEST

The autotest function is available for 120/277V. It is factory preset without any allowable field adjustment. The automatic self-diagnostic feature serves the following tests:

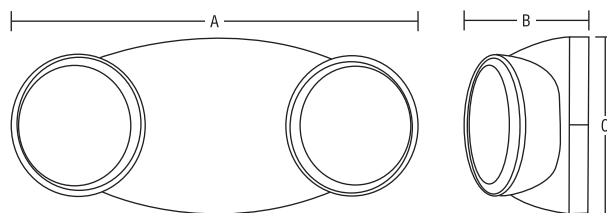
- On-line real time monitoring of battery and lamps (both local and remote): identifies battery charging, disconnection and failure along with local and remote lamp failures.
- Self-testing and a 15-minute discharge once in every 30 days, after AC power has been supplied for a minimum of 24 hrs.
- Self-testing and a 90-minute discharge once in every year, after AC power has been supplied for a minimum of 24 hrs.

WARRANTY

The LSLEDEM1 comes with a 3-year factory warranty. Lamps are not covered under the warranty. Deliberate damage, misuse, improper installation effectively cancel the warranty.



DIMENSIONS



Series	A	B	C
LSLEDEM1	9" 229mm	3.25" 83mm	4.75" 121mm

Power (W)	Lumen Output (lm)	Spacing (m/ft)	
AC: 2.81 W	144 lm (72 lm each)	1 fc ave 1 fc min	16 ft (min=0.4fc) 9 ft
Battery Specifications: 3.6V long life, maintenance-free, rechargeable Ni-Cd battery.			

ELECTRICAL RATING

AC	120V 0.04A 2.81W
	277V 0.03A 2.38W
DC	3.6V 0.85A 3.06W

ORDERING LOGIC

Series	Options
LSLEDEM1	AT (autotest) B (black finish) RC (remote capable) ¹

¹Ask your LSL Rep For Compatible Remote Heads

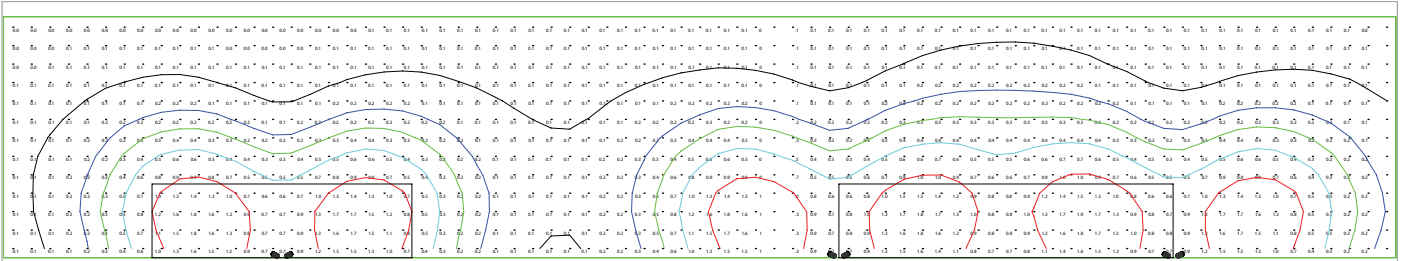


Job Name: _____

Type: _____

Part #: _____

Notes: _____



14' x 4' Area
7.5' Mtg Height
Illuminance Values(Fc)
Average =1.19
Maximum =1.8
Minimum =0.6
Avg/Min Ratio=1.98
Max/Min Ratio=3.00

18' Center 4' Wide
Illuminance Values(Fc)
Average =1.16
Maximum =1.9
Minimum =0.6
Avg/Min Ratio=1.93
Max/Min Ratio=3.17