

# HBLP SERIES

The **HBLP** series is a back lit LED flat panel made in the USA, with selectable 3500K, 4000K, or 5000K color temperatures. Designed for recessed, surface mounting, or suspended applications.

**APPLICATIONS:** The HBLP series is perfect for offices, schools, government buildings, commercial applications, and any application that requires a quality flat panel light with adjustable color temperature.

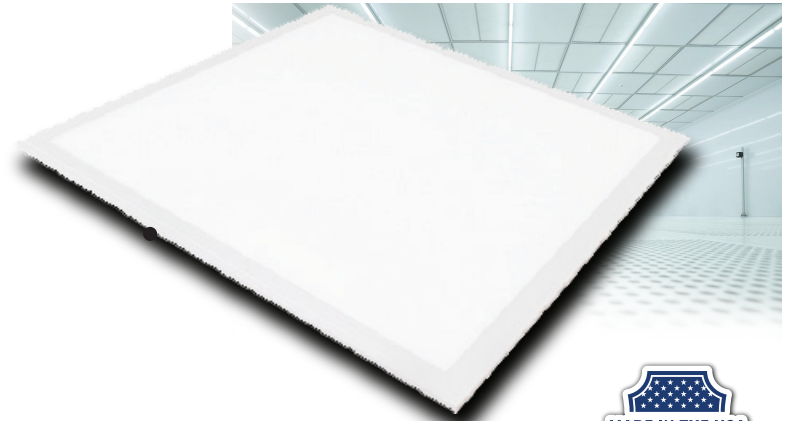
**OPTICAL SYSTEM:** Color temperature selectable in 3500K, 4000K, and 5000K. >80 CRI with a lifetime rating of >50,000.

**ELECTRICAL SYSTEM:** 0-10V dimming driver standard, Selectable wattage (see below).

**MOUNTING:** This fixture is designed for recessed, surface, or suspended mounting.

**LISTINGS:** UL and cUL Listed. DLC listed. Independently tested to IESNA LM-79 and LM-80 specifications.

**WARRANTY:** 5-Year Limited Warranty.



## CCT/WATTAGE SELECTABLE LED FLAT PANEL LIGHT

Output	Delivered Lumens	Luminous Efficacy	L70 @25C (hrs)
20W	2500	125 lm/W	>50K
25W	3125	125 lm/W	>50K
30W	3750	125 lm/W	>50K
40W	5000	125 lm/W	>50K
50W	6250	125 lm/W	>50K

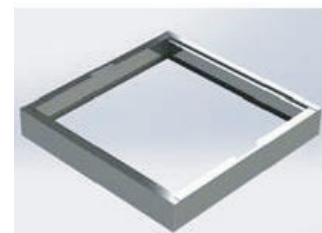
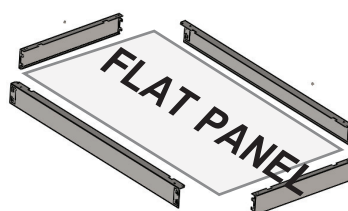
### ORDERING INFORMATION

Example: HBLP-24-S-S-M-EM

SERIES	SIZE	CCT	OUTPUT	VOLTAGE	DRIVER OPTIONS
HBLP	14 1x4 22 2x2 24 2x4	S Selectable CCT 3500K, 4000K, 5000K	S Selectable Wattage 20W/25W/30W - 1X4 20W/25W/30W - 2X2 30W/40W/50W - 2X4	M Multi-Volt (120-277VAC)	14EBL 14W Emergency FK14 1x4 Sheetrock Flange Kit FK22 2x2 Sheetrock Flange Kit FK24 2x4 Sheetrock Flange Kit SMS Surface Mount Shroud FW 6' Flex Whip AC20 20' Aircraft Cable 125P .125 Clear Polycarbonate Outer Lens

### Low Profile Flat Panel Shroud

SHROUD
SMSFP22 12x48
SMSFP22 24x24
SMSFP22 24x48

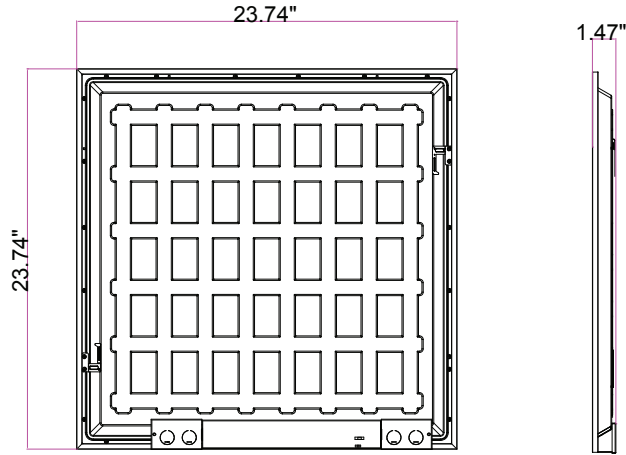


Job Name: \_\_\_\_\_

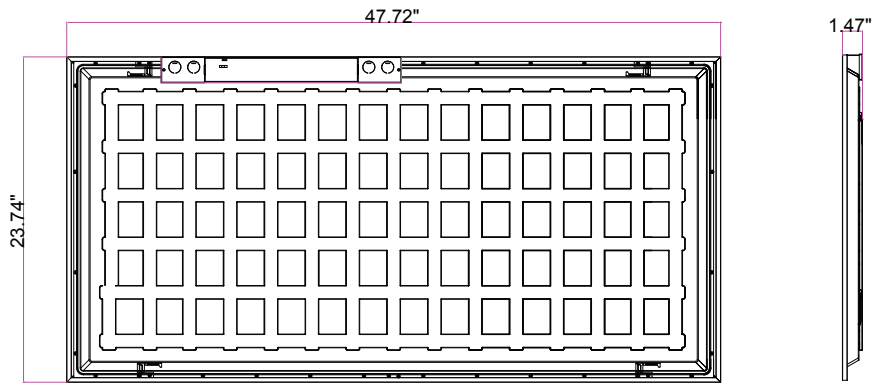
Type: \_\_\_\_\_

Part #: \_\_\_\_\_

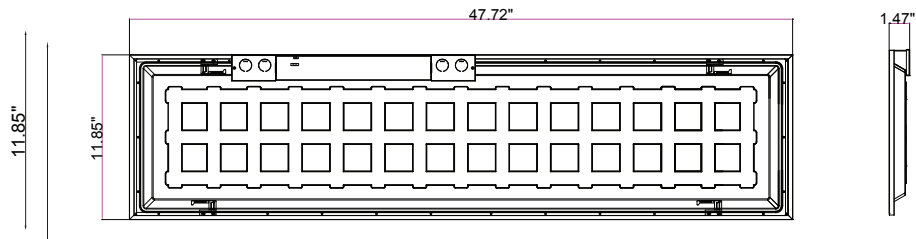
Notes: \_\_\_\_\_



2x2



2x4



1x4